

Project Profile

Lancaster General Hospital
Lancaster, Pa.

Scope:
New, two-story \$28 million
addition to the existing power
plant with added capabilities



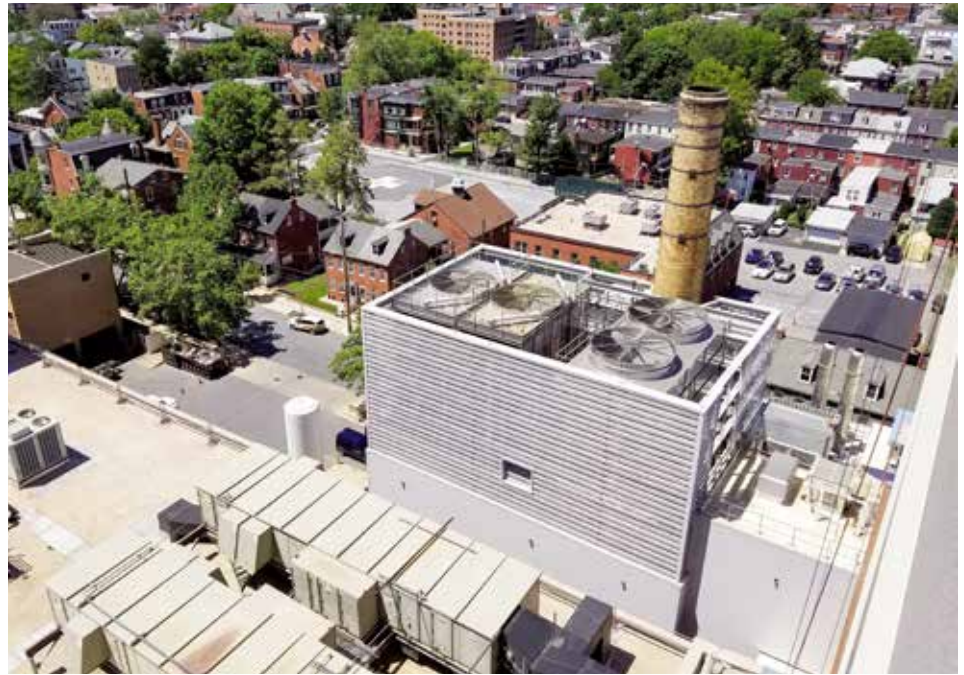
Chilled water pumps.



Natural gas turbine with insulated ductwork.



Gas pressure regulator station.



An aerial view of the new, massive Evapco cooling towers.

Project Spotlight

LGH's New Energy Center of the Future

The new, two-story, \$28 million addition to the existing power plant at Lancaster General Hospital brings added capabilities with a state-of-the-art, natural gas-powered energy center. This new facility is being called the “Energy Center of the Future” and comes complete with a pair of new 2 megawatt backup generators—fueled by 50,000 gallons of low sulfur diesel—that work in conjunction with the hospital’s two existing 2.1 megawatt generators. All of this is designed to power LGH for up to four full days if needed.

James CRAFT & Son is proud to have been involved in this cutting-edge facility to fulfill the requirements of the project’s unique mechanical package. The scope of work included significant demolition; fabrication and installation of the generator exhaust breeching; and installation of the new solar combustion turbine, the natural gas compressor and the heat recovery steam generator, as well as the massive Evapco cooling towers.

The fuel and lube oil supply/return piping, chilled and condenser water pumps, condenser water piping, chilled water system, water treatment and high pressure steam piping were also part of our contract. Additionally, we were responsible for assembly and installation of the new steam turbine-driven chiller, as well as fabrication and installation of all HVAC ductwork, piping and related systems within the facility.

“While electricity reliability is at an all-time high, LGH’s tolerance for failure is literally zero. During surgery or at other critical moments in patient care, even a flicker of power has the potential to impact outcomes,” added Troy Hafer, Project Manager for Benchmark Construction, the project’s general contractor.



2780 York Haven Road • York Haven, PA 17370
TEL: 717-266-6629 • FAX: 717-266-6623

www.jamesCRAFTson.com

Building a History of Exceptional Quality Since 1900

